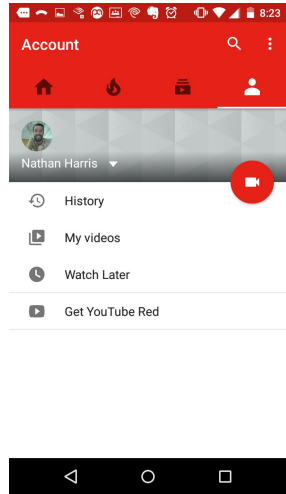
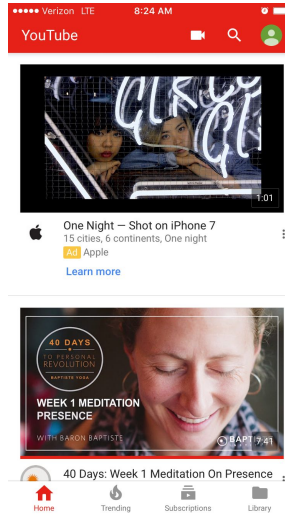


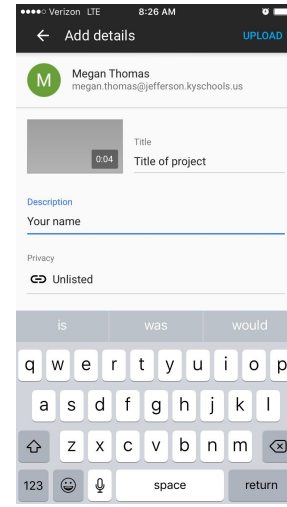
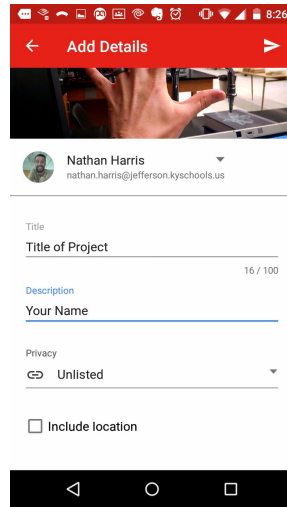
VIDEO PRESENTATION MST SCIENCE FAIR						TOTAL ____/50 pts	
	4	3	2	1	0	Multiplier	Points Earned
Length (6-8 min)	Length of presentation section of video within the accepted range.	Length of presentation section of video within one minute too long or short.	Length of presentation section of video within two minutes too long or short.	Length of presentation section of video within three minutes too long or short	Length of presentation section of video more than three minutes too long or short	1.5	____/6
Board (pan over the board or poster at the end of the video)	Major sections of science fair paper clearly and fully included, with appropriate data visuals	Sections included, but somewhat disorganized.	Sections included, with some information missing.	Key information missing from board or poster.	No poster or board included or no scan over the board at the end of the video, so it cannot be judged.	2	____/8
Support or Nonsupport of Hypothesis by Data	Hypothesis status unequivocally stated and supported.	Poor support of hypothesis by data	Support and hypothesis disconnected.	Incorrect information used in support	No mention of hypothesis	2.5	____/10
Full Explanation of Methodology	Methodology explained thoroughly and clearly so that an intelligent non-expert can easily follow.	Holes in explanation of methodology or not appropriately leveled	Holes in explanation of methodology and not appropriately leveled	Few details given as to methodology	No explanation of methodology.	2	____/8
Explanation of Results, with Relevant Statistics	Data used to support results, including pertinent statistical tests	Statistical tests poorly explained.	Statistical tests incorrectly applied	Statistics included, but incorrectly	No statistics used in explanation	2.5	____/10

Presentation Skills	Clarity of voice, eye contact, minimal "umms" and "errs"	Minor issues with presentation ability.	Major issues with presentation ability.	Presentation mostly inaudible and unjudgeable.	Presentation inaudible or otherwise incapable of being judged	2	___/8
----------------------------	--	---	---	--	---	---	-------

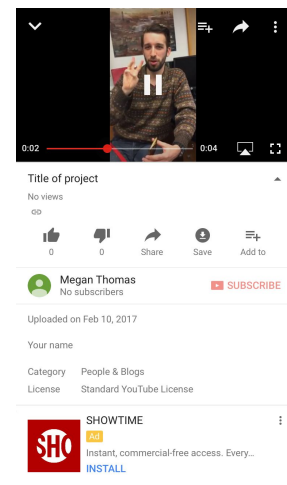
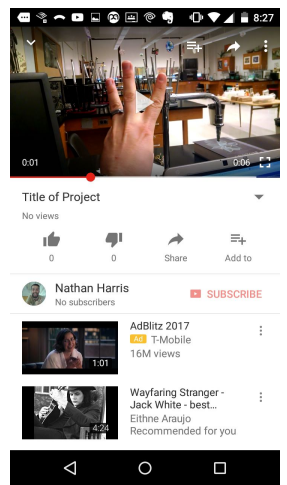
Record your video with a stationary camera. Be sure the presentation is reasonably well lit and audible. After presenting, pan slowly over your board or poster to show each part of it.

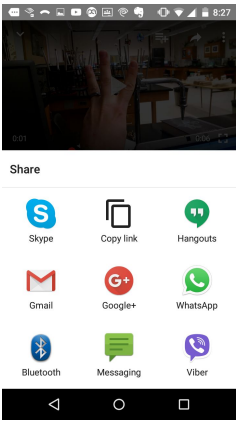
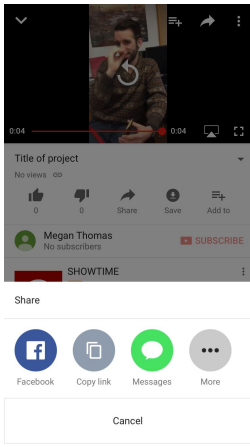
Video Posting Directions		
	Android	iPhone
<p>Open, or download and then open the Youtube App.</p> <p>Be sure you are logged in with your school account (firstname.lastname@stu.jefferson.kyschools.us)</p> <p>Android: Select the "My Account" section. Press the red camera button to start recording.</p> <p>iPhone: Click the camera icon on the main screen.</p>		

Use the name of your project as the name of the video, with your name as the description. Set privacy settings to "Unlisted."



On the video play screen, the arrow in the top right corner to share..



<p>Select "copy link."</p> <p>iPhone: select "More," then "copy link"</p>		
<p>On Google Classroom, post the link to your video in the appropriate assignment.</p>	